

DEFINITION OF TERMS

TOTAL OPERATIONS SPENDING:

Money that each district budgeted to spend from its general and special projects funds, excepting an inter-fund transfers or non-program transactions. The general fund accounts for all financial transactions of a district's current operations except those required to be in a different fund; the special projects fund accounts for activities that are funded wholly or in part by specific federal or state grant programs. The per-pupil number was calculated by dividing each district's total operating expenditures by its 2014-15 enrollment.

PROPERTY TAX REVENUE:

Per-pupil (2014-15 Total Enrollment) revenue from property taxes is reported in the general fund dedicated by each district for the 2014-15 school year.

TOTAL REVENUE:

Total per-pupil revenue from all sources, including property taxes, state aid, and federal aid by each district for the 2014-15 school year.

Total Enrollment: Number of pre-kindergarten through 12th graders who are attending schools or receiving homebound instruction as of the third Friday in September 2015.

ONE-YEAR CHANGE IN ENROLLMENT:

Percent change in total enrollment from 2014-15 to 2015-16.

MINORITY ENROLLMENT:

Percentage of 2015-16 enrollments who are American Indian or Alaska Native, Asian, African-American, Hispanic, Native Hawaiian or Pacific Islander, or two or more races.

FREE OR REDUCED LUNCH:

The number of students eligible for free or reduced-price lunch divided by the number of students enrolled in October 2015 who had access to the lunch program.

ENGLISH LANGUAGE LEARNERS (ELL):

Percentage of 2015-16 enrollments whose first language is not English and who are designated as ELL based on the outcome of language and academic assessments.

ACT SCORES:

ACT data is reported for the class of 2015. Most students take the test to fulfill admissions requirements for colleges and universities. If a student has taken the test more than once (in either his or her junior or senior year), the most recent score was reported. The maximum possible score on any individual section is 36. The four sections of the test are English, math, reading, and science reasoning. The composite score is the weighted average of the subject area scores, out of a possible 36. The listed number is the average score for each district.

HIGH SCHOOL GRADUATION:

The number of graduates receiving a regular diploma within four years in June 2015 divided by an estimate of the total cohort group measured from the beginning of high school, expressed as a percentage.

NON-WHITE HIGH SCHOOL GRADUATION:

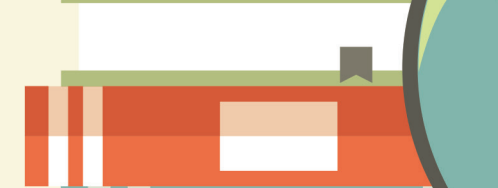
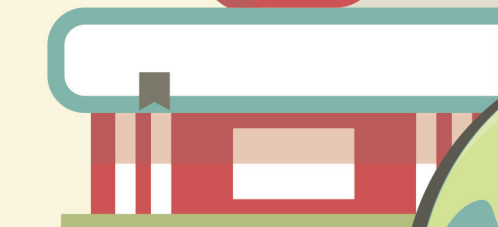
The number of graduates who are American Indian or Alaska Native, Asian, African-American, Hispanic, Native Hawaiian or Pacific Islander, or two or more races and received a regular diploma within four years in June 2015 divided by an estimate of the total cohort group of non-white students measured from the beginning of high school, expressed as a percentage.



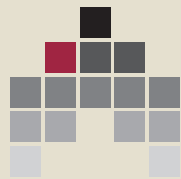
PUBLIC SCHOOLING

IN SOUTHEAST WISCONSIN

2015-2016



PUBLIC POLICY FORUM



**SOUTHEAST WISCONSIN
SCHOOL DISTRICT PERFORMANCE**

RESEARCH BY:
PUBLIC POLICY FORUM

	TOTAL OPERATIONS SPENDING		PROPERTY TAX REVENUE		TOTAL OPERATIONS REVENUE		TOTAL ENROLLMENT		ONE-YEAR ENROLLMENT CHANGE		MINORITY ENROLLMENT		ECONOMICALLY DISADVANTAGED		3RD GRADE PROFICIENT/ADVANCED		8TH GRADE PROFICIENT/ADVANCED		ACT COMPOSITE	HIGH SCHOOL GRADUATION
	Rank	Per Pupil	Rank	Per Pupil	Rank	Per Pupil	Rank	Enroll	Rank	Change	Rank	Enroll	Rank	Enroll	ELA	Math	ELA	Math	Score	Percent
KENOSHA COUNTY																				
Central/Westosha Union	14	\$12,211	33	\$5,154	18	\$12,232	22	3,841	28	-0.9%	35	12.2%	20	27.0%	60.6%	58.0%	51.5%	35.5%	23.2	92.9%
Kenosha	29	\$11,439	49	\$3,244	27	\$11,675	2	22,160	30	-1.2%	5	49.0%	6	50.5%	44.9%	45.9%	40.6%	27.0%	21.2	87.9%
Wilmot Union	9	\$12,726	28	\$5,775	9	\$12,885	28	3,176	47	-3.6%	41	10.4%	18	30.9%	48.2%	53.9%	52.4%	40.9%	22.4	88.1%
MILWAUKEE COUNTY																				
Brown Deer	6	\$13,278	11	\$7,397	6	\$13,269	47	1,581	16	0.5%	2	71.2%	10	45.6%	57.1%	52.4%	29.7%	32.2%	20.1	95.2%
Cudahy	8	\$12,890	48	\$3,544	10	\$12,516	39	2,519	26	-0.3%	13	33.9%	7	47.2%	40.2%	40.2%	25.1%	13.7%	20.6	93.3%
Franklin Public	15	\$12,183	20	\$6,531	13	\$12,434	16	4,464	8	1.5%	22	24.2%	45	11.3%	63.5%	68.4%	60.9%	46.7%	23.6	84.0%
Greendale	23	\$11,627	40	\$4,475	20	\$11,913	37	2,641	20	0.2%	24	22.6%	24	25.3%	53.2%	66.2%	73.5%	55.4%	24.5	97.7%
Greenfield	45	\$10,695	37	\$4,682	46	\$10,749	24	3,618	48	-4.1%	7	41.8%	27	23.9%	51.7%	42.7%	44.5%	34.3%	21.9	86.1%
Milwaukee	2	\$14,156	45	\$3,629	2	\$14,134	1	75,749	40	-2.0%	1	87.1%	2	67.3%	20.4%	20.7%	22.2%	10.5%	16.2	58.2%
Nicolet Union	1	\$15,905	1	\$12,140	1	\$15,939	25	3,539	14	0.7%	8	38.0%	30	19.9%	57.7%	63.0%	50.8%	45.1%	24.1	98.1%
Oak Creek-Franklin	49	\$10,059	43	\$4,106	49	\$10,244	9	6,582	21	0.1%	16	26.6%	21	26.9%	59.2%	69.0%	50.1%	45.6%	21.7	96.9%
Saint Francis	41	\$10,911	42	\$4,261	36	\$11,219	48	1,194	24	-0.2%	11	34.7%	9	45.8%	45.3%	48.0%	40.8%	42.3%	20.0	91.9%
Shorewood	17	\$12,103	17	\$6,903	16	\$12,410	42	2,146	10	1.3%	12	34.2%	31	19.1%	61.4%	64.1%	49.7%	43.6%	24.9	97.0%
South Milwaukee	38	\$11,070	50	\$2,447	38	\$11,197	27	3,266	17	0.5%	18	25.7%	5	52.0%	35.6%	37.1%	37.9%	31.3%	21.9	97.3%
Wauwatosa	43	\$10,829	31	\$5,227	45	\$10,774	6	7,271	15	0.6%	9	34.9%	23	26.0%	60.6%	61.9%	47.5%	43.2%	23.7	93.5%
West Allis	19	\$12,016	47	\$3,609	41	\$11,109	5	9,545	46	-3.5%	6	45.4%	4	59.5%	43.8%	50.7%	30.4%	19.1%	20.1	93.2%
Whitefish Bay	39	\$11,053	22	\$6,380	34	\$11,324	32	3,031	36	-1.7%	23	23.1%	50	1.5%	78.2%	72.0%	65.1%	73.8%	25.8	93.3%
Whitnall	28	\$11,445	19	\$6,704	28	\$11,630	38	2,521	3	3.1%	19	25.5%	25	25.2%	58.6%	75.9%	47.6%	47.0%	22.2	96.8%
OZAUKEE COUNTY																				
Cedarburg	47	\$10,476	21	\$6,485	42	\$10,889	33	2,932	42	-2.3%	44	9.0%	48	8.5%	73.7%	69.6%	56.1%	54.7%	25.5	98.6%
Grafton	34	\$11,187	15	\$6,965	33	\$11,380	41	2,208	13	0.8%	32	13.5%	34	16.0%	66.9%	65.5%	51.0%	31.1%	24.2	98.9%
Mequon-Thiensville	16	\$12,168	3	\$9,695	7	\$13,067	23	3,720	2	3.9%	25	22.1%	47	9.0%	76.6%	83.7%	61.1%	44.6%	25.9	97.6%
Northern Ozaukee	37	\$11,132	39	\$4,578	37	\$11,219	49	1,141	50	-6.5%	33	13.3%	22	26.6%	36.4%	36.4%	48.9%	24.4%	22.4	76.2%
Port Washington-Saukville	22	\$11,637	34	\$5,037	22	\$11,811	36	2,657	18	0.4%	37	11.1%	29	21.8%	67.7%	61.4%	58.8%	38.1%	23.7	96.2%
RACINE COUNTY																				
Burlington Area	12	\$12,375	27	\$5,826	14	\$12,417	29	3,165	37	-1.8%	28	18.8%	13	36.7%	56.1%	58.6%	68.7%	38.8%	22.2	95.8%
Racine	4	\$13,393	46	\$3,622	5	\$13,351	3	19,184	45	-3.2%	3	59.1%	3	59.9%	21.6%	28.5%	16.7%	9.1%	19.9	74.3%
Union Grove Union	31	\$11,244	38	\$4,672	24	\$11,697	35	2,875	11	1.3%	43	9.2%	33	17.4%	53.0%	39.9%	49.1%	43.5%	21.9	99.2%
Waterford Union	7	\$13,109	23	\$6,281	4	\$13,575	31	3,141	5	2.2%	45	8.9%	39	14.1%	52.5%	73.2%	57.8%	50.2%	23.5	94.6%
WALWORTH COUNTY																				
Big Foot Union	3	\$13,784	9	\$7,951	3	\$13,750	45	1,681	49	-5.1%	17	25.9%	8	46.1%	44.0%	48.3%	57.6%	39.0%	21.5	92.2%
Delavan-Darien	11	\$12,443	29	\$5,704	15	\$12,411	40	2,312	44	-3.2%	4	53.4%	1	68.6%	22.6%	27.0%	14.0%	23.8%	20.7	96.1%
East Troy Community	40	\$11,000	10	\$7,731	39	\$11,148	46	1,647	39	-2.0%	40	10.5%	19	29.5%	31.3%	32.2%	38.1%	31.4%	23.2	98.5%
Elkhorn Area	48	\$10,410	36	\$4,756	48	\$10,452	26	3,315	6	2.1%	27	19.0%	15	33.7%	48.8%	51.6%	43.7%	31.6%	22.1	94.6%
Lake Geneva-Genoa City Union	21	\$11,714	13	\$7,274	17	\$12,240	18	4,427	34	-1.6%	21	24.4%	12	41.2%	49.8%	56.8%	48.3%	42.3%	22.6	83.4%
Whitewater	26	\$11,484	18	\$6,710	26	\$11,676	43	1,940	29	-1.1%	9	34.9%	11	41.6%	41.3%	52.1%	30.9%	28.1%	23.5	88.6%
Williams Bay	25	\$11,542	4	\$9,362	21	\$11,815	50	680	4	2.7%	38	10.7%	16	32.1%	32.6%	39.1%	54.0%	30.0%	24.1	93.0%
WASHINGTON COUNTY																				
Germantown	30	\$11,376	16	\$6,914	32	\$11,445	21	3,931	22	0.0%	29	17.4%	37	14.2%	60.3%	60.3%	58.0%	67.8%	23.7	95.1%
Hartford Union	13	\$12,234	24	\$6,000	11	\$12,480	15	4,527	41	-2.1%	36	11.8%	26	24.7%	59.3%	54.2%	62.2%	37.8%	23.4	92.2%
Kewaskum	42	\$10,892	32	\$5,177	40	\$11,145	44	1,847	27	-0.6%	49	8.2%	28	22.0%	63.8%	56.9%	47.4%	54.0%	21.9	95.0%
Slinger	50	\$9,944	44	\$3,867	50	\$9,965	30	3,160	7	1.6%	50	7.2%	36	14.7%	63.8%	74.8%	63.4%	59.5%	23.9	97.9%
West Bend	32	\$11,214	41	\$4,429	47	\$10,647	8	6,814	33	-1.5%	34	13.2%	17	31.6%	62.5%	62.1%	48.8%	43.2%	21.7	88.4%
WAUKESHA COUNTY																				
Arrowhead Union	18	\$12,067	14	\$7,094	19	\$12,225	10	6,485	32	-1.5%	46	8.8%	49	8.1%	64.3%	74.1%	64.8%	68.8%	25.1	96.6%
Elmbrook	5	\$13,316	2	\$9,797	8	\$12,892	7	7,005	19	0.2%	15	26.7%	46	9.6%	58.0%	70.5%	60.4%	53.6%	25.5	96.6%
Hamilton	27	\$11,477	26	\$5,928	35	\$11,226	14	4,711	25	-0.2%	30	16.8%	38	14.2%	72.4%	74.1%	68.1%	53.1%	24.5	96.7%
Kettle Moraine	24	\$11,600	12	\$7,337	23	\$11,795	20	3,989	35	-1.7%	42	9.7%	42	12.7%	64.1%	65.2%	56.9%	61.2%	23.9	96.1%
Menomonee Falls	10	\$12,451	6	\$8,298	12	\$12,472	19	4,041	31	-1.4%	20	24.6%	35	15.8%	51.9%	70.3%	53.0%	31.1%	23.5	98.0%
Mukwonago	44	\$10,736	35	\$4,942	43	\$10,854	13	4,872	1	4.3%	48	8.3%	40	13.9%	58.4%	72.2%	55.0%	49.0%	23.4	97.2%
Muskego-Norway	33	\$11,213	25	\$5,954	31	\$11,478	12	4,889	12	1.0%	47	8.6%	44	11.5%	60.3%	73.3%	61.3%	65.1%	23.3	95.8%
New Berlin	20	\$11,937	5	\$9,360	25	\$11,689	17	4,445	38	-1.8%	31	16.6%	41	13.4%	61.8%	77.5%	53.6%	59.7%	24.1	98.3%
Oconomowoc Area	35	\$11,169	7	\$8,165	29	\$11,518	11	5,264	22	0.0%	39	10.6%	32	17.9%	42.7%	54.3%	45.1%	43.1%	23.0	97.3%
Pewaukee	46	\$10,597	8	\$7,969	44	\$10,826	34	2,876	9	1.4%	26	19.9%	43	11.9%	74.6%	77.1%	49.8%	42.9%	24.5	95.2%
Waukesha	36	\$11,163	30	\$5,607	30	\$11,498	4	13,145	43	-2.6%	14	33.2%	14	36.2%	41.9%	51.2%	41.2%	40.9%	22.7	84.0%
SOUTHEAST WISCONSIN		\$12,219		\$5,133		\$12,446		297,870		-1.2%		43.3%		40.1%	43.2%	47.0%	41.8%	33.5%	22.9	83.9%
STATE OF WISCONSIN		\$11,867		\$4,663		\$11,935		867,137		-0.4%		28.8%		39.5%	43.3%	48.3%	41.1%	33.7%	22.1	88.4%

CONCORDIA UNIVERSITY
WISCONSIN

Northwestern
Mutual

Greater Milwaukee
FOUNDATION
greater together

Children's
Hospital of Wisconsin

ALVERNO COLLEGE
ESTABLISHED 1887

RESEARCH MADE
POSSIBLE BY:

Southeastern Wisconsin
Schools Alliance